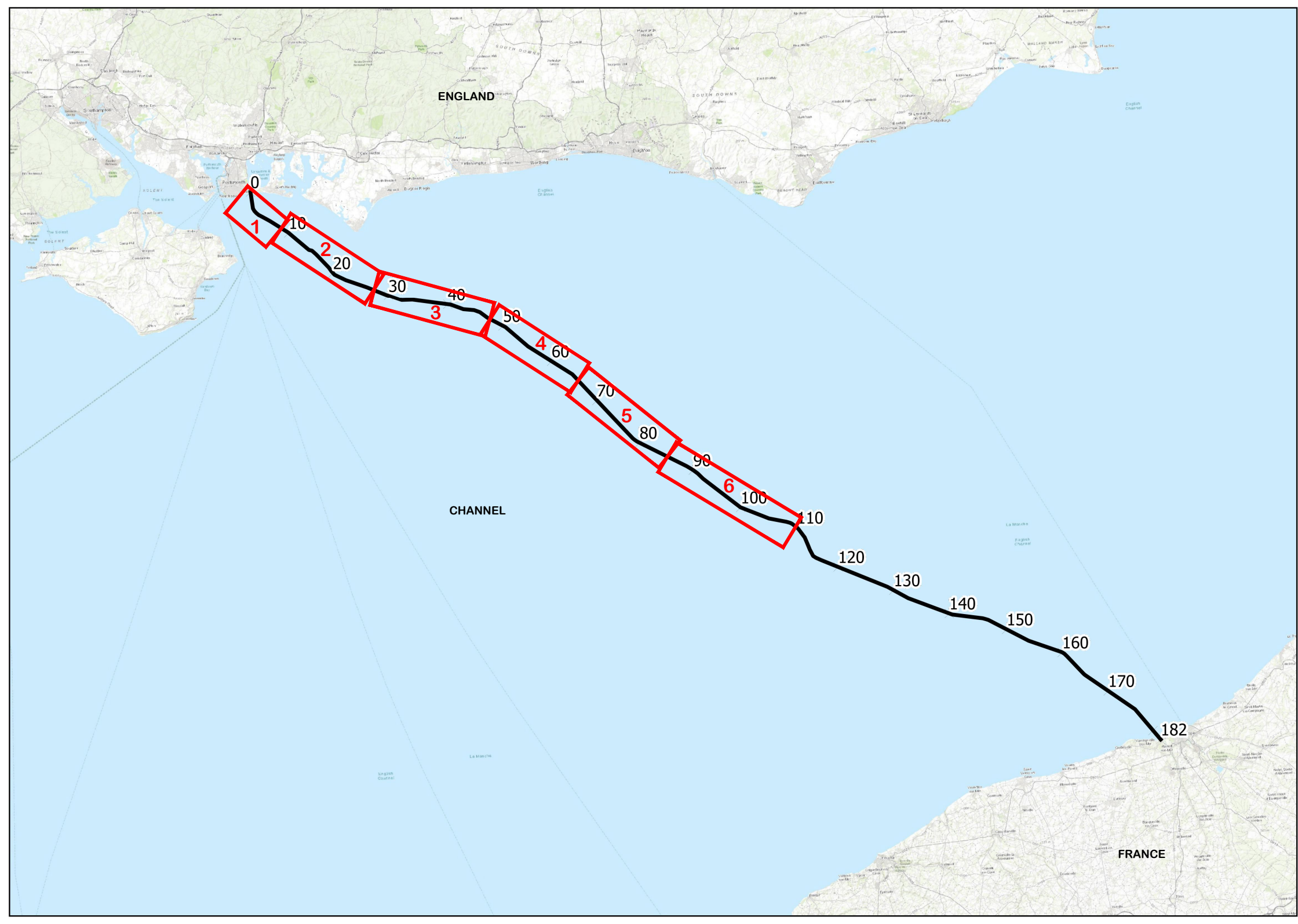


File name \\UK.WSPGROUP.COM\CENTRAL_DATA\PROJECTS\62100XXX\62100616 - AQUIND VO NO.3\IE MODELS AND DRAWINGS\300 - SITE\340 - TASK 9 MARINE ROUTE\CURRENT\ENVIRONMENTAL STATEMENT\UK\REV 1\FIGURE 3.4 UK SHALLOW GEOLOGY.DWG.



The Infrastructure Planning (Environmental Impact Assessment) Regulations 2017 - Regulation 5(2)(a)

REV	DATE	BY	DESCRIPTION	CHK	APP
01	01/10/2019	SA	FIRST ISSUE	CDL	CDL

DRAWING STATUS: **FINAL**



WSP House, 70 Chancery Lane, London, WC2A 1AF, UK
T+ 44 (0) 207 314 5000, F+ 44 (0) 207 314 5111
wsp.com



PROJECT:
AQUIND Interconnector

TITLE:
**Figure 3.4
Shallow Geology Key Plan
Sheet 0 of 6**

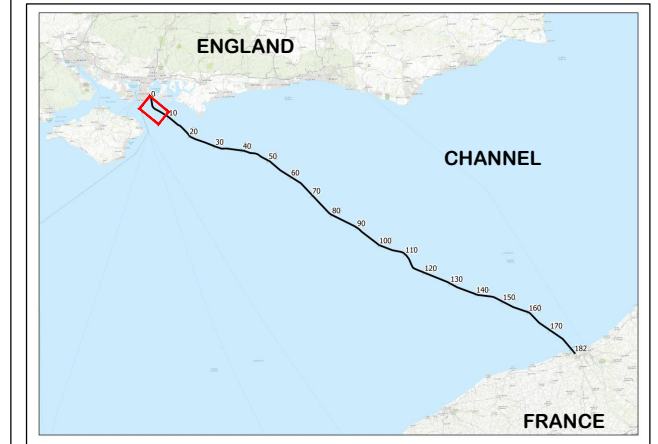
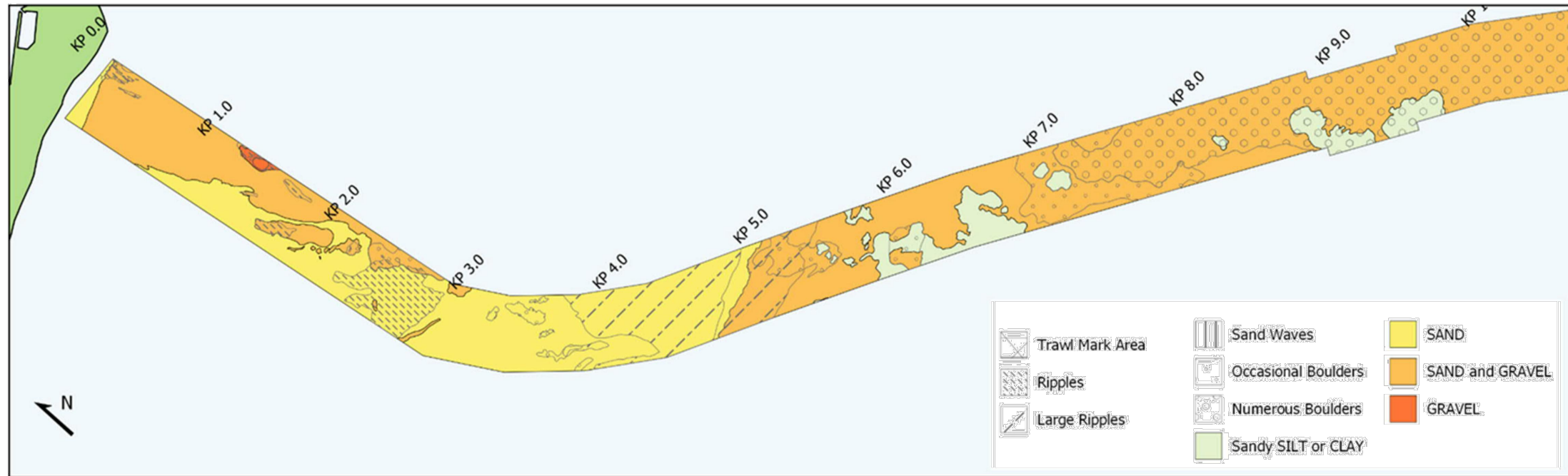
SCALE AT A3: NOT TO SCALE	CHECKED: CDL	APPROVED: CDL
------------------------------	-----------------	------------------

PROJECT No: EN020022	DESIGNED: SA	DRAWN: SA	DATE: 01/10/2019
-------------------------	-----------------	--------------	---------------------

DRAWING No: EN020022 - ES - 3.4 Sheet 0	REV: 01
--	------------

© WSP UK Ltd

File name \\UK.WSPGROUP.COM\CENTRAL DATA\PROJECTS\62100XXXX62100616 - AQUIND VO NO.3\E MODELS AND DRAWINGS\300 - SITE\340 - TASK 9 MARINE ROUTE\CURRENT\ENVIRONMENTAL STATEMENT\UK\REV 1\FIGURE 3.4 UK SHALLOW GEOLOGY.DWG.



The Infrastructure Planning (Environmental Impact Assessment) Regulations 2017 - Regulation 5(2)(a)

REV	DATE	BY	DESCRIPTION	CHK	APP
01	01/10/2019	SA	FIRST ISSUE	ca	ca

DRAWING STATUS: **FINAL**



WSP House, 70 Chancery Lane, London, WC2A 1AF, UK
T+ 44 (0) 207 314 5000, F+ 44 (0) 207 314 5111
wsp.com

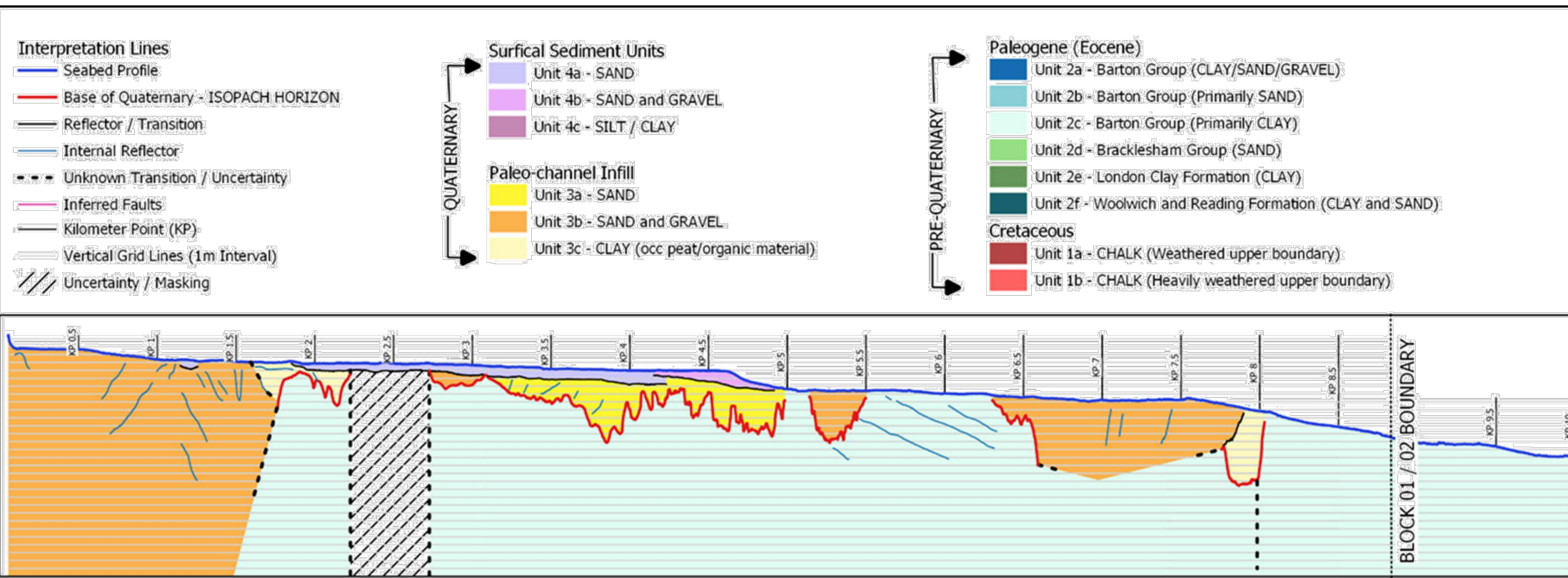


PROJECT: **AQUIND Interconnector**

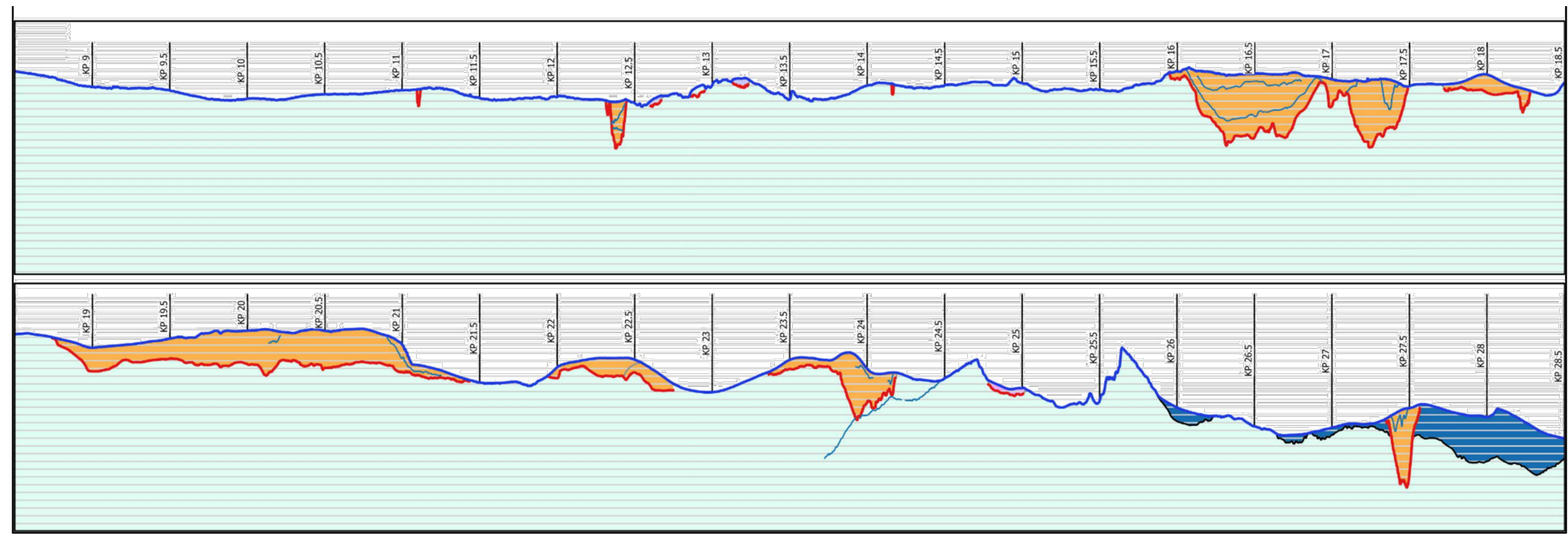
TITLE: **Figure 3.4
Shallow Geology
KP 0 - KP 9.5
Sheet 1 of 6**

SCALE AT A3: NOT TO SCALE	CHECKED: CDL	APPROVED: CDL
PROJECT No: EN020022	DESIGNED: SA	DRAWN: SA
DRAWING No: EN020022 - ES - 3.4 Sheet 1		DATE: 01/10/2019
		REV: 01

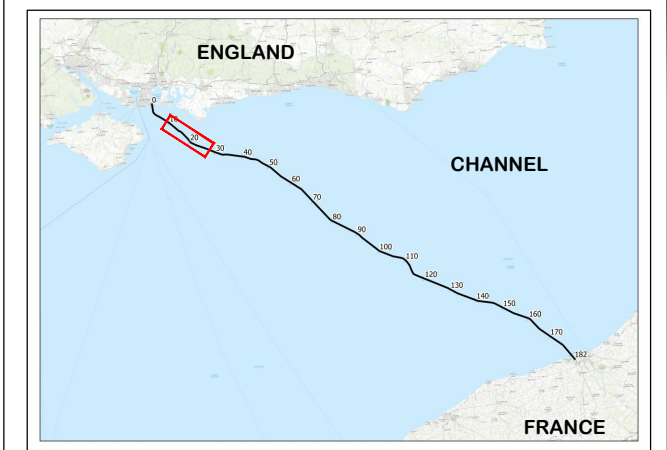
© WSP UK Ltd



File name \\UK.WSPGROUP.COM\CENTRAL_DATA\PROJECTS\62100XXXX\62100616 - AQUIND VO NO.3\IE MODELS AND DRAWINGS\300 - SITE\340 - TASK 9 MARINE ROUTE\CURRENT\ENVIRONMENTAL STATEMENT\UK\REV 1\FIGURE 3.4 UK SHALLOW GEOLOGY.DWG.



PLEASE SEE SHEET 1 OF 6 FOR PROFILE LEGEND



The Infrastructure Planning (Environmental Impact Assessment) Regulations 2017 - Regulation 5(2)(a)

REV	DATE	BY	DESCRIPTION	CHK	APP
01	01/10/2019	SA	FIRST ISSUE	ca	ca

DRAWING STATUS: **FINAL**



WSP House, 70 Chancery Lane, London, WC2A 1AF, UK
T+ 44 (0) 207 314 5000, F+ 44 (0) 207 314 5111
wsp.com

CLIENT:



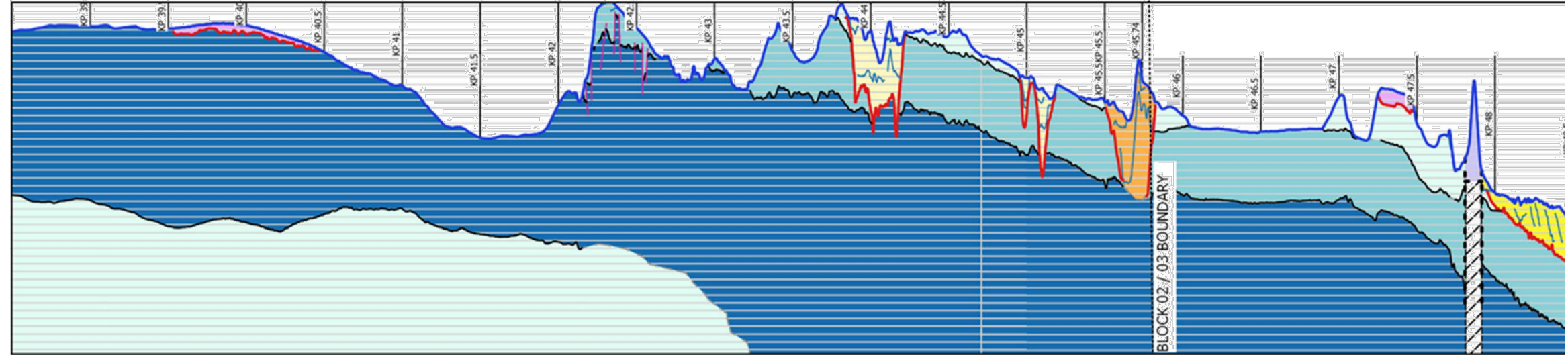
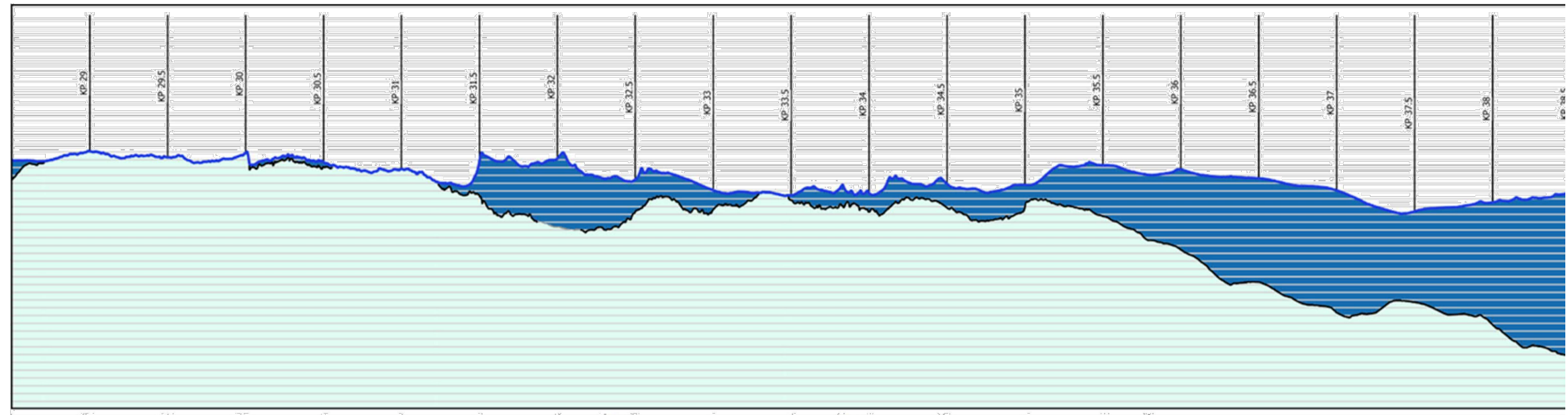
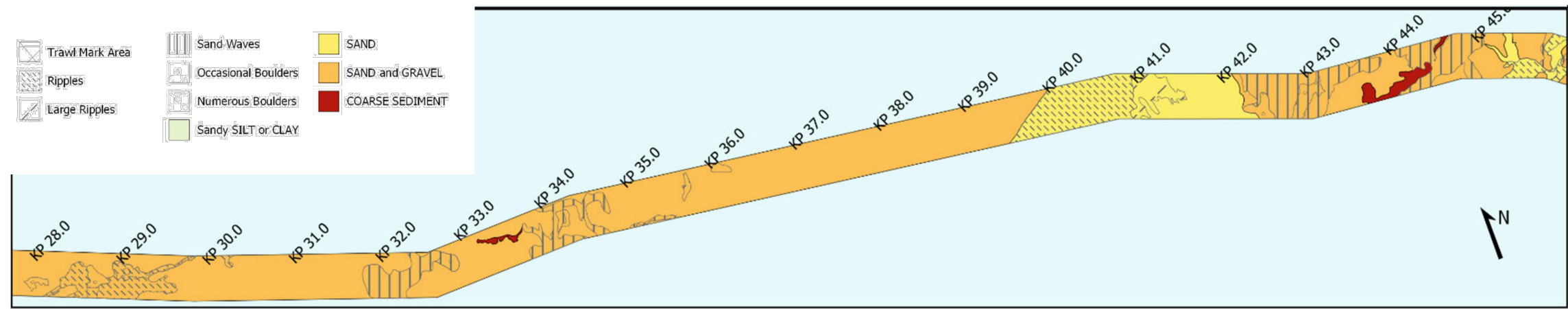
PROJECT:
AQUIND Interconnector

TITLE:
**Figure 3.4
Shallow Geology
KP 9.5 - KP 28.5
Sheet 2 of 6**

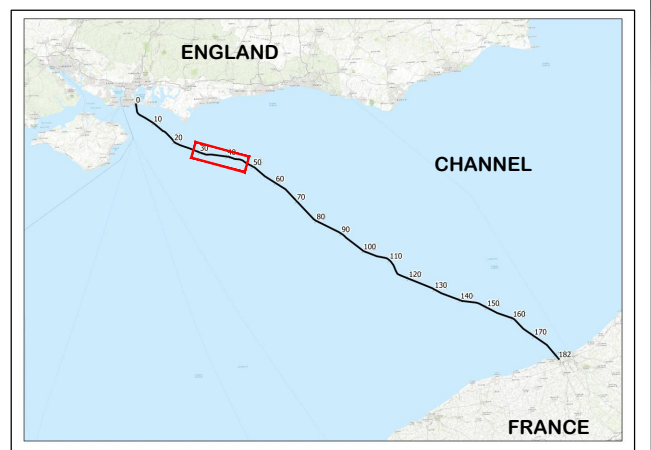
SCALE AT A3: NOT TO SCALE	CHECKED: CDL	APPROVED: CDL
PROJECT No: EN020022	DESIGNED: SA	DRAWN: SA
DRAWING No: EN020022 - ES - 3.4 Sheet 2		DATE: 01/10/2019
		REV: 01

© WSP UK Ltd

File name \\UK.WSPGROUP.COM\CENTRAL_DATA\PROJECTS\62100XXXX\62100616 - AQUIND VO NO.3\IE MODELS AND DRAWINGS\300 - SITE\340 - TASK 9 MARINE ROUTE\CURRENT\ENVIRONMENTAL STATEMENT\UK\REV 1\FIGURE 3.4 UK SHALLOW GEOLOGY.DWG.



PLEASE SEE SHEET 1 OF 6 FOR PROFILE LEGEND



The Infrastructure Planning (Environmental Impact Assessment) Regulations 2017 - Regulation 5(2)(a)

REV	DATE	BY	DESCRIPTION	CHK	APP
01	01/10/2019	CP	FIRST ISSUE	ca	ca

DRAWING STATUS: **FINAL**



WSP House, 70 Chancery Lane, London, WC2A 1AF, UK
T+ 44 (0) 207 314 5000, F+ 44 (0) 207 314 5111
wsp.com

CLIENT:



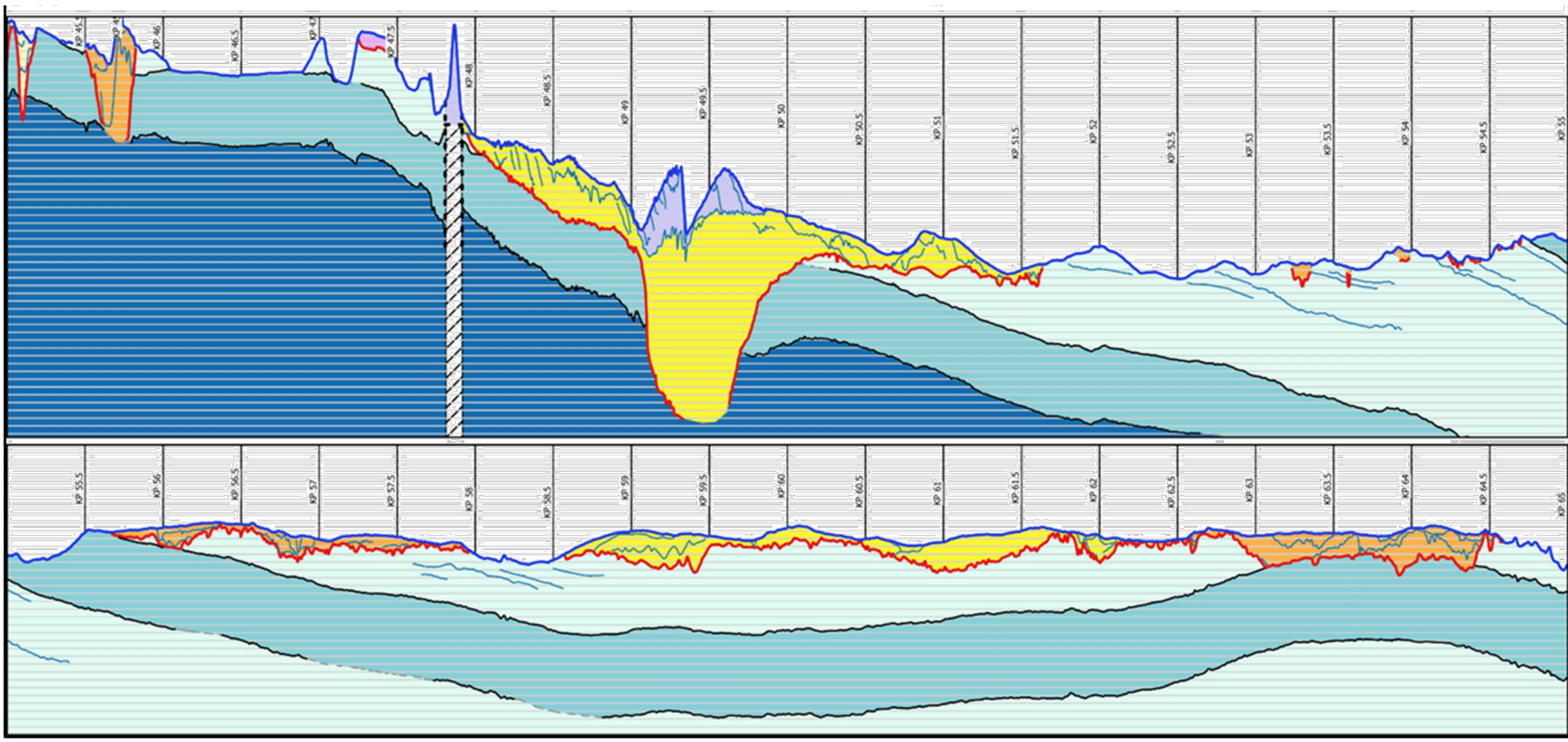
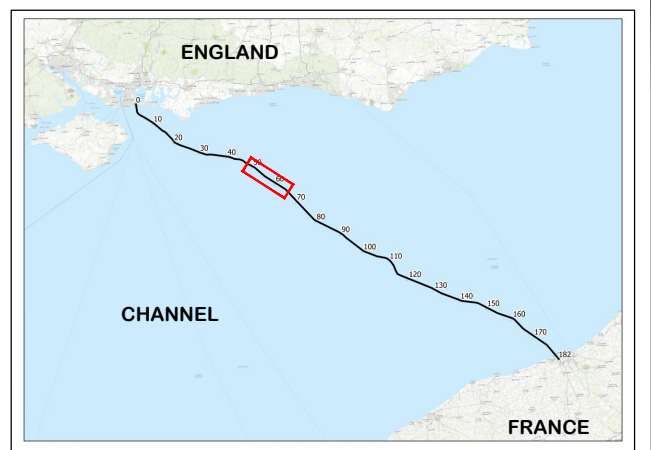
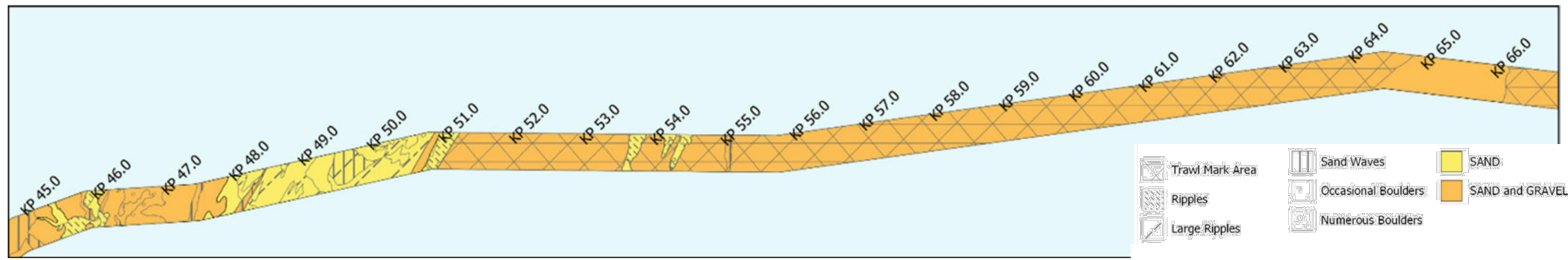
PROJECT: **AQUIND Interconnector**

TITLE: **Figure 3.4
Shallow Geology
KP 28.5 - KP 45
Sheet 3 of 6**

SCALE AT A3: NOT TO SCALE	CHECKED: CDL	APPROVED: CDL
PROJECT No: EN020022	DESIGNED: SA	DRAWN: SA
DRAWING No: EN020022 - ES - 3.4 Sheet 3		DATE: 01/10/2019
		REV: 01

© WSP UK Ltd

File name \\UK.WSPGROUP.COM\CENTRAL_DATA\PROJECTS\62100XXX\62100616 - AQUIND VO NO.3\IE MODELS AND DRAWINGS\300 - SITE\340 - TASK 9 MARINE ROUTE\CURRENT\ENVIRONMENTAL STATEMENT\UK\REV 1\FIGURE 3.4 UK SHALLOW GEOLOGY.DWG.



PLEASE SEE SHEET 1 OF 6 FOR PROFILE LEGEND

The Infrastructure Planning (Environmental Impact Assessment) Regulations 2017 - Regulation 5(2)(a)

REV	DATE	BY	DESCRIPTION	CHK	APP
01	01/10/2019	CP	FIRST ISSUE	ca	ca

DRAWING STATUS: **FINAL**

wsp

WSP House, 70 Chancery Lane, London, WC2A 1AF, UK
T+ 44 (0) 207 314 5000, F+ 44 (0) 207 314 5111
wsp.com

CLIENT:

AQUIND

PROJECT:

AQUIND Interconnector

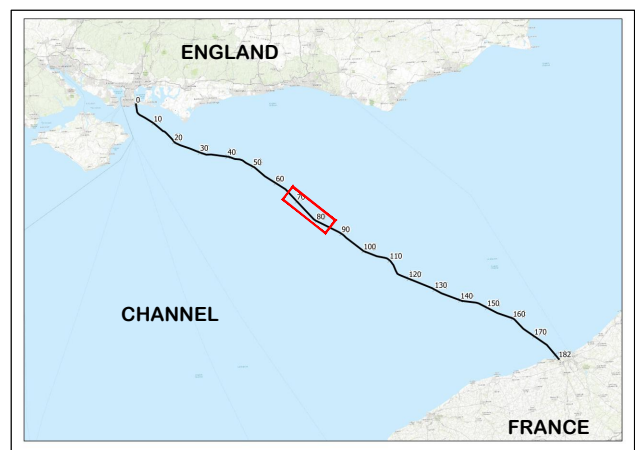
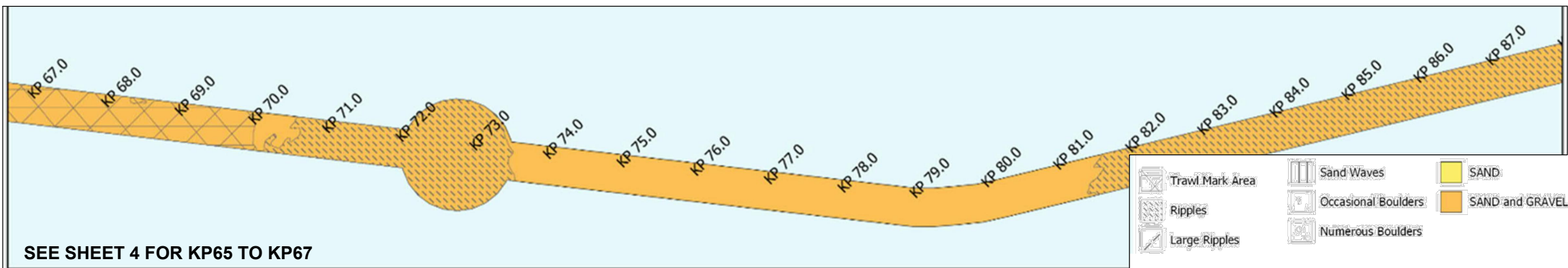
TITLE:

Figure 3.4
Shallow Geology
KP 45 - KP 65
Sheet 4 of 6

SCALE AT A3: NOT TO SCALE	CHECKED: CDL	APPROVED: CDL
PROJECT No: EN020022	DESIGNED: SA	DRAWN: SA
DRAWING No: EN020022 - ES - 3.4 Sheet 4		DATE: 01/10/2019
		REV: 01

© WSP UK Ltd

File name \\UK.WSPGROUP.COM\CENTRAL_DATA\PROJECTS\62100XXX\62100616 - AQUIND VO NO.3\E MODELS AND DRAWINGS\300 - SITE\340 - TASK 9 MARINE ROUTE\CURRENT\ENVIRONMENTAL STATEMENT\UK\REV 1\FIGURE 3.4 UK SHALLOW GEOLOGY.DWG.



The Infrastructure Planning (Environmental Impact Assessment) Regulations 2017 - Regulation 5(2)(a)

REV	DATE	BY	DESCRIPTION	CHK	APP
01	01/10/2019	CP	FIRST ISSUE	CDL	CDL

DRAWING STATUS: **FINAL**



WSP House, 70 Chancery Lane, London, WC2A 1AF, UK
T+ 44 (0) 207 314 5000, F+ 44 (0) 207 314 5111
wsp.com

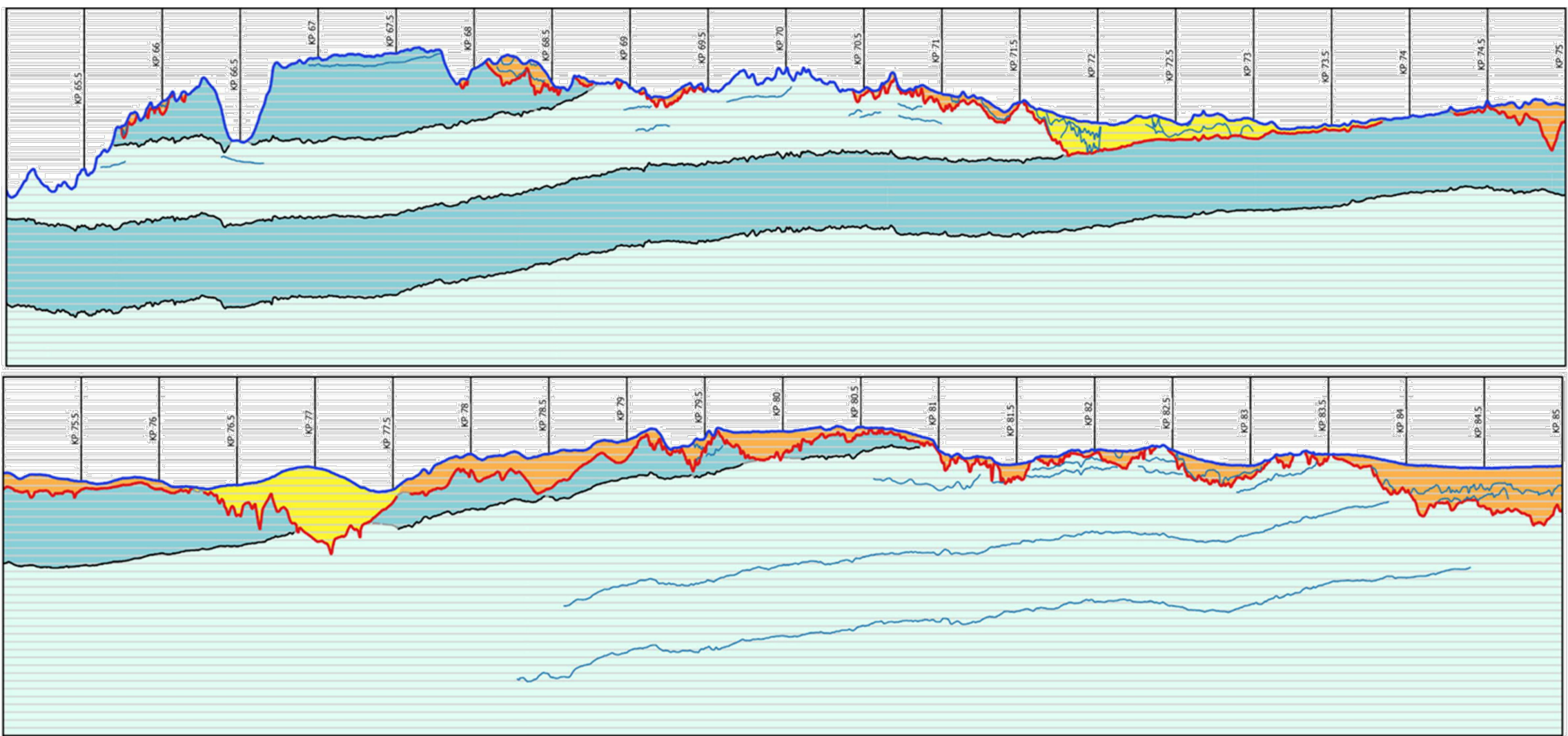


PROJECT: **AQUIND Interconnector**

TITLE: **Figure 3.4
Shallow Geology
KP 65 - KP 85
Sheet 5 of 6**

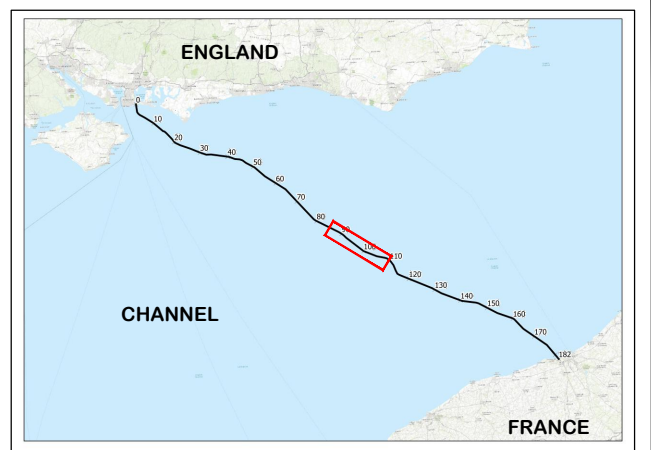
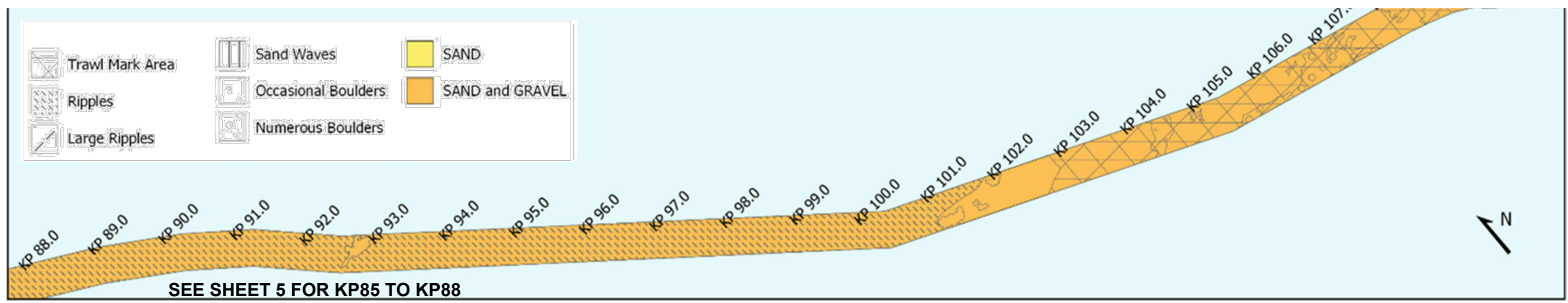
SCALE AT A3: NOT TO SCALE	CHECKED: CDL	APPROVED: CDL
PROJECT No: EN020022	DESIGNED: SA	DRAWN: SA
DRAWING No: EN020022 - ES - 3.4 Sheet 5		DATE: 01/10/2019
		REV: 01

© WSP UK Ltd



PLEASE SEE SHEET 1 OF 6 FOR PROFILE LEGEND

File name \\UK.WSPGROUP.COM\CENTRAL DATA\PROJECTS\62100XXX\62100616 - AQUIND VO NO.3\IE MODELS AND DRAWINGS\300 - SITE\340 - TASK 9 MARINE ROUTE\CURRENT\ENVIRONMENTAL STATEMENT\UK\REV 1\FIGURE 3.4 UK SHALLOW GEOLOGY.DWG.



The Infrastructure Planning (Environmental Impact Assessment) Regulations 2017 - Regulation 5(2)(a)

REV	DATE	BY	DESCRIPTION	CHK	APP
01	01/10/2019	CP	FIRST ISSUE	ca	ca

DRAWING STATUS: **FINAL**



WSP House, 70 Chancery Lane, London, WC2A 1AF, UK
T+ 44 (0) 207 314 5000, F+ 44 (0) 207 314 5111
wsp.com



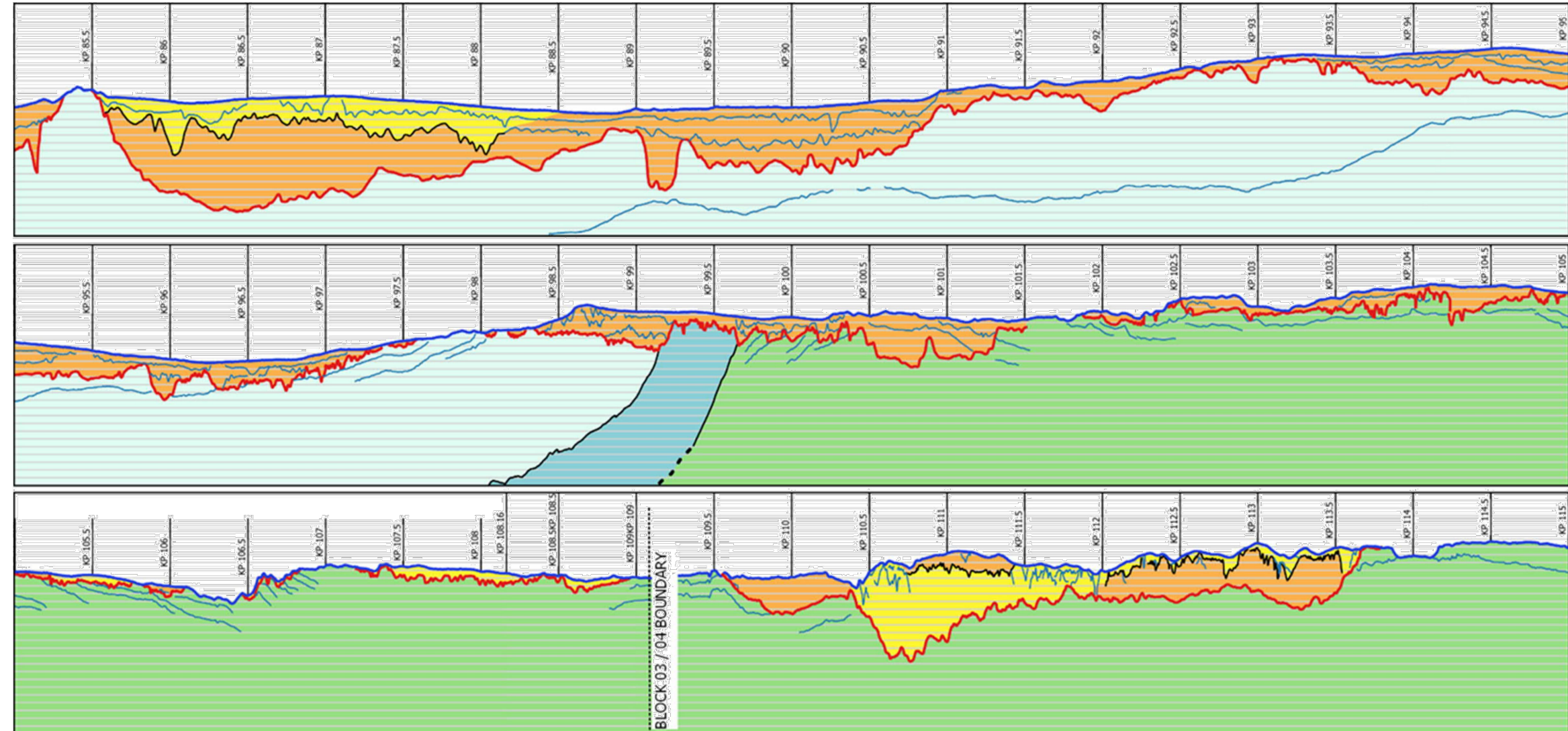
PROJECT: **AQUIND Interconnector**

TITLE: **Figure 3.4
Shallow Geology
KP 85 - KP 109.107
Sheet 6 of 6**

SCALE AT A3: NOT TO SCALE	CHECKED: CDL	APPROVED: CDL
------------------------------	-----------------	------------------

PROJECT No: EN020022	DESIGNED: SA	DRAWN: SA	DATE: 01/10/2019
-------------------------	-----------------	--------------	---------------------

DRAWING No: EN020022 - ES - 3.4 Sheet 6	REV: 01
--	------------



PLEASE SEE SHEET 1 OF 6 FOR PROFILE LEGEND